



5000 Series Repair Couplings

The Ultimate RC - Engineered for resistance to heavy earth loads and shear forces, while providing improved pipe alignment.



.012" (12mil) Stainless Steel Shield

Ultimate Shear Resistance - .012" (12mil) 300 series stainless steel shear ring is the heaviest the industry offers with an excellent resistance to corrosion.

Ultimate Pipe Alignment - Due to the thickness and strength of the 5000 Series shear ring, you are assured consistent pipe alignment against shear forces from soil compaction, shifting and settling, and improper backfill.

Ultimate Sealing Clamps - 316 series stainless steel nut and bolt clamps provide the strongest seal and the greatest corrosion resistance possible.

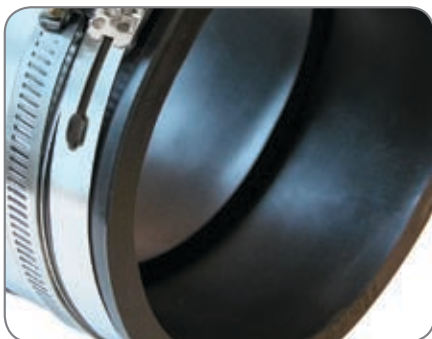
Fernco RC Series Couplings offer the same product features and benefits and also meet ASTM C 1173, but come with 301 series stainless steel worm gear clamps.



316 S.S. Nut and Bolt Clamps

Ultimate Sealing Gasket - The 5000 Series gasket have a smooth inside surface that provides greater sealing surface area against the pipe. This creates a more positive seal and a higher coefficient of drag that prevents slippage during shear forces. Also, the gaskets are made of tough PVC that have an excellent resistance to UV rays, chemicals, fungus growth, normal sewer gases and do not prematurely dry rot from exposure to excess salt and sodium.

Ultimate Transition Connections - For the transition connection of differing pipe sizes or materials, the 5000 Series gasket features a one piece molded-in bushing.

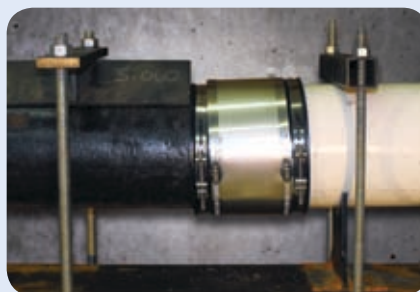


One Piece Molded-in Bushing Gaskets

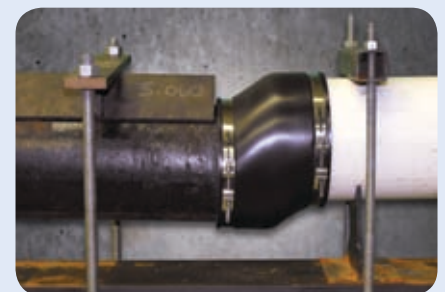
Ultimate Versatility - The 5000 Series offers the ability to connect clay, concrete, asbestos cement fibre, ductile iron, cast iron, steel, plastic and copper.

Manufactured to meet the material requirements of:

- **CSA B602** - mechanical couplings for drain, waste, vent pipe and sewer pipe
- **ASTM D 5926** - Standard Specification for Poly Vinyl Chloride (PVC) Gaskets for Drain, Waste, and Vent (DWV), Sewer, Sanitary, and Storm Plumbing Systems
- **ASTM C 1173** - Standard Specification for Flexible Transition Couplings for Underground Piping Systems



Shear Resistance Test using a Fernco **5000 Series Repair Coupling** per ASTM C 1173 (applied load 50 pounds per nominal inch of pipe diameter)



Shear Resistance Test using an unshielded sewer coupling per ASTM C 1173 (applied load 50 pounds per nominal inch of pipe diameter)



5001 RC Series - Clay to Clay

Fernco Part No.	Mission Part No.	A		B		C	
		in.	mm	in.	mm	in.	mm
5001-44RC	MR01 44 ARC	5.29	134	5.29	134	4.10	104
5001-44WCRC	MR01 44 ARC	5.51	140	5.51	140	3.97	101
5001-64RC	N/A	7.50	191	5.50	140	6.02	153
5001-66RC	MR01 66 ARC	7.50	191	7.50	191	6.02	153
5001-66WCRC	MR01 66 ARC	8.01	203	8.01	203	6.00	152
5001-88RC	MR01 88 ARC	9.65	245	9.65	245	5.99	152
5001-88WCRC	MR01 88 ARC	10.00	254	10.00	254	6.00	152
5001-1010RC	MR01 1010 ARC	12.40	315	12.40	315	5.90	150
5001-1010WCRC	MR01 1010 ARC	12.40	315	12.40	315	5.90	150
5001-1212RC	MR01 1212 ARC	14.51	369	14.51	369	6.38	162
5001-1515RC	MR01 1515 ARC	18.14	461	18.14	461	9.89	251
5001-1818RC	MR01 1818 ARC	21.90	556	21.90	556	9.63	245

5002 RC Series - Clay to Cast Iron or Plastic

Fernco Part No.	Mission Part No.	A		B		C	
		in.	mm	in.	mm	in.	mm
5002-43RC	MR02 43 ARC	5.29	134	3.38	86	4.10	104
5002-44RC	MR02 44 ARC	5.36	136	4.51	115	4.07	103
5002-44WCRC	MR02 44 ARC	5.44	138	4.55	116	3.96	101
5002-46RC	MR02 46 ARC	7.50	191	5.13	130	6.02	153
5002-55RC	MR02 55 ARC	6.60	168	5.50	140	5.74	146
5002-64RC	MR02 64 ARC	7.50	191	4.50	114	6.02	153
5002-64WCRC	MR02 64 ARC	8.02	204	4.57	116	6.00	152
5002-66RC	MR02 66 ARC	7.50	191	6.56	167	5.89	150
5002-66WCRC	MR02 66 ARC	8.04	204	6.38	162	5.91	150
5002-86RC	MR02 86 ARC	9.65	245	6.63	168	6.00	152
5002-88RC	MR02 88 ARC	9.76	248	8.57	218	5.96	151
5002-88WCRC	MR02 88 ARC	10.00	254	8.66	220	6.00	152
5002-1010RC	MR02 1010 ARC	12.40	315	10.75	273	5.90	150
5002-1010WCRC	MR02 1010 ARC	12.40	315	10.75	273	5.90	150
5002-1212RC	MR02 1212 ARC	14.51	369	12.60	320	6.38	162
5002-1515RC	MR02 1515 ARC	18.14	461	15.40	391	9.89	251
5002-1818RC	MR02 1818 ARC	21.90	556	19.00	483	9.63	245

5003 RC Series - Clay to Asbestos Cement Fibre or Ductile Iron

Fernco Part No.	Mission Part No.	A		B		C	
		in.	mm	in.	mm	in.	mm
5003-44RC	MR03 44 ARC	5.41	137	4.94	125	4.07	103
5003-66RC	MR03 66 ARC	7.25	184	6.84	174	5.93	151
5003-88RC	MR03 88 ARC	9.75	248	9.06	230	5.94	151
5003-1212RC	MR03 1212 ARC	14.51	369	13.20	335	6.38	162
5003-1516RC	MR03 1516 ARC	18.10	460	18.10	460	9.89	251

5004 RC Series - Concrete to Concrete

Fernco Part No.	Mission Part No.	A		B		C	
		in.	mm	in.	mm	in.	mm
5004-44RC	MR05 44 ARC	5.51	140	5.51	140	3.97	101
5004-66RC	MR04 66 ARC	7.58	193	7.58	193	5.94	151
5004-88RC	MR04 88 ARC	10.38	264	10.38	264	5.90	150

5004-1010RC	MR04 1010 ARC	12.40	315	12.40	315	5.90	150
5004-1212RC	MR04 1212 ARC	15.25	387	15.25	387	6.42	163
5004-1212LCRC	MR04 1212 ARC	16.10	409	16.10	409	9.89	251

5006 RC Series - Concrete to Cast Iron or Plastic

Fernco Part No.	Mission Part No.	A		B		C	
		in.	mm	in.	mm	in.	mm
5006-44RC	MR06 44 ARC	5.51	140	4.50	114	3.97	101
5006-66RC	MR06 66 ARC	7.58	193	6.63	168	5.94	151
5006-88RC	MR06 88 ARC	10.38	264	8.50	216	5.90	150
5006-1010RC	MR06 1010 ARC	12.40	315	10.75	273	5.90	150
5006-1212RC	MR06 1212 ARC	15.25	387	12.60	320	6.42	163
5006-1212LCRC	MR06 1212 ARC	16.10	409	12.60	320	9.89	251

5051 RC Series -

Asbestos Cement Fibre (AC) or Ductile Iron to CI or PL

Fernco Part No.	Mission Part No.	A		B		C	
		in.	mm	in.	mm	in.	mm
5051-44RC	MR51 44 ARC	4.80	122	4.39	112	3.94	100
5051-46RC	N/A	6.60	168	4.75	121	5.74	146
5051-64RC	N/A	6.95	177	4.38	111	5.92	150
5051-66RC	MR51 66 ARC	6.96	177	6.69	170	5.91	150
5051-88RC	MR51 88 ARC	9.25	235	8.51	216	5.97	152
5051-1010RC	MR51 1010 ARC	11.02	280	10.52	267	5.85	148
5051-1212RC	MR51 1212 ARC	13.20	335	12.60	320	5.97	152
5051-1615RC	MR51 1615 ARC	18.14	461	15.40	391	9.89	251

5055 RC Series - Asbestos Cement Fibre or Ductile Iron to Asbestos Cement Fibre or Ductile Iron

Fernco Part No.	Mission Part No.	A		B		C	
		in.	mm	in.	mm	in.	mm
5055-44RC	MR55 44 ARC	4.75	121	4.75	121	3.96	101
5055-66RC	MR55 66 ARC	6.65	169	6.65	169	5.92	150
5055-88RC	MR55 88 ARC	9.05	230	9.05	230	5.98	152
5055-1212RC	MR55 1212 ARC	13.20	335	13.20	335	5.98	152

5056 RC Series -

CI, PL, Copper, or Steel to CI, PL, Copper, or Steel

Fernco Part No.	Mission Part No.	A		B		C	
		in.	mm	in.	mm	in.	mm
5056-43RC	MR56 43 ARC	4.58	116	3.38	86	4.02	102
5056-44RC	MR56 44 ARC	4.58	116	4.58	116	4.02	102
5056-44XLR	N/A		0		0		0
5056-54RC	MR56 54 ARC	5.52	140	4.38	111	3.97	101
5056-55RC	MR56 55 ARC	5.52	140	5.52	140	3.97	101
5056-64RC	MR56 64 ARC	6.60	168	4.50	114	5.74	146
5056-66RC	MR56 66 ARC	6.60	168	6.60	168	5.74	146
5056-88RC	MR56 88 ARC	8.64	219	8.64	219	6.04	153
5056-1010RC	MR56 1010 ARC	10.63	270	10.63	270	5.89	150
5056-1212RC	MR56 1212 ARC	12.52	318	12.52	318	6.32	161
5056-1515RC	MR56 1515 ARC	15.44	392	15.44	392	9.89	251
5056-1818RC	MR56 1818 ARC	19.00	483	19.00	483	9.89	251
5056-2424RC	N/A	25.10	638	25.10	638	9.89	251