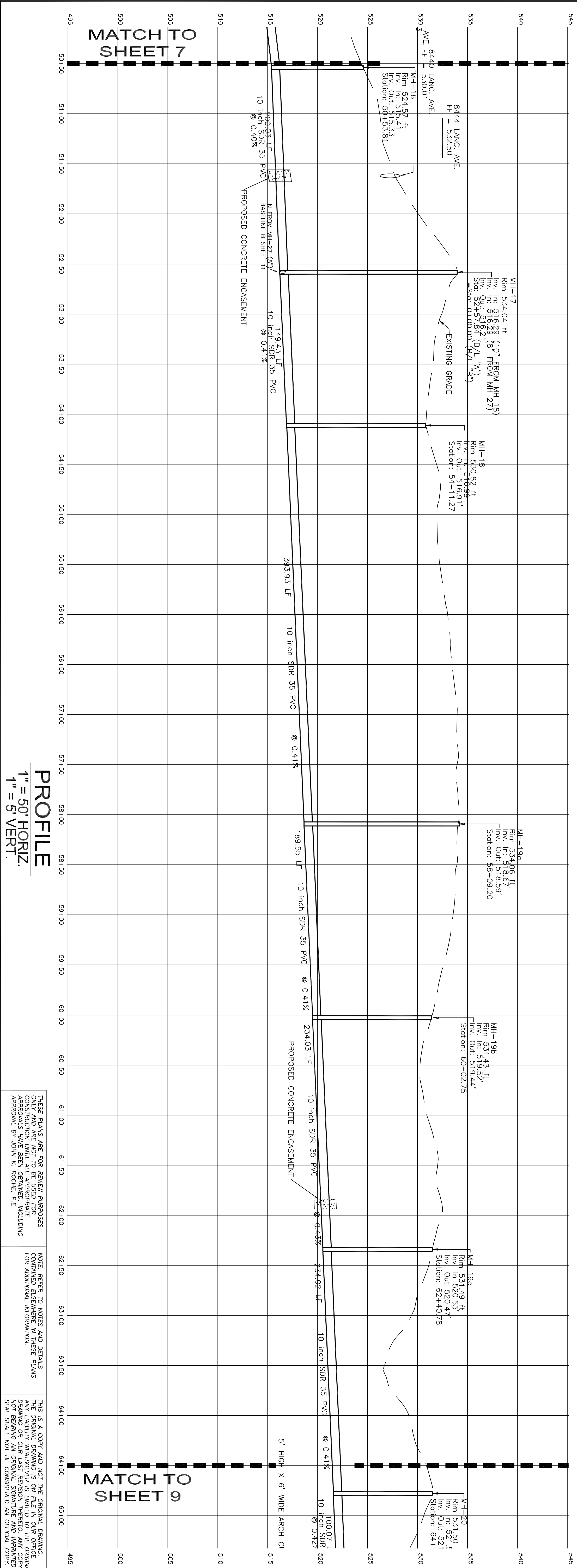


BASELINE A STA. 50+50 TO 64+50

PLAN



PROFILE
1" = 50' HORIZ.
1" = 5' VERT.

THESE PLANS ARE FOR REVIEW PURPOSES ONLY AND ARE NOT TO BE USED FOR CONSTRUCTION UNTIL ALL APPROPRIATE APPROVALS ARE OBTAINED, INCLUDING APPROVAL BY JOHN K. ROCHE, P.E.

NOTE: REFER TO NOTES AND DETAILS CONTAINED ELSEWHERE IN THESE PLANS FOR ADDITIONAL INFORMATION.

THIS IS A COPY AND NOT THE ORIGINAL DRAWING. THE ORIGINAL DRAWING IS ON FILE IN OUR OFFICE. ANY LIABILITY WHATSOEVER IS LIMITED TO THE ORIGINAL NOT BEARING AN ORIGINAL SIGNATURE AND IMPRINTED SEAL SHALL NOT BE CONSIDERED AN OFFICIAL COPY.

<p>VISION ENGINEERING, INC. CIVIL - SITE - MUNICIPAL 155 E. FRONT ST. - LITITZ, PA 17543 TEL. (717) 625-1930 FAX (717) 625 1931</p>	<p>PROJECT TITLE SANITARY SEWER PLANS COLLECTION & CONVEYANCE LINES FOR THE VILLAGE OF BETHEL</p> <p>BETHEL TOWNSHIP BERKS COUNTY, PA</p>		<p>CLIENT BETHEL TOWNSHIP MUNICIPAL AUTHORITY P.O. BOX 24 BETHEL, PA 19507 (717) 933-8813</p>		<p>MANAGER: JOHN K. ROCHE</p> <p>DESIGN BY: BSC/ASC CHECKED BY: JKR</p> <p>DRAWN BY: JTB/ACH CHECKED BY: JKR</p>		<p>SEAL</p> <p>JOHN K. ROCHE PE-053824-E</p>	<p>SEAL</p>	<table border="1"> <tr> <td>1</td> <td>2/14/08</td> <td>EASEMENT REVISION</td> </tr> <tr> <td>NO</td> <td>DATE</td> <td>REVISION</td> </tr> </table>	1	2/14/08	EASEMENT REVISION	NO	DATE	REVISION
	1	2/14/08	EASEMENT REVISION												
NO	DATE	REVISION													
<p>DATE: JULY 3, 2006 PROJECT NO.: BTMA-0301 SHEET NO.: 8 OF 44</p>	<p>SHEET TITLE PLAN AND PROFILE (Sheet 5 of 19)</p>		<p>SCALE 1" = 50'</p>		<p>DATE: JULY 3, 2006 PROJECT NO.: BTMA-0301 SHEET NO.: 8 OF 44</p>										