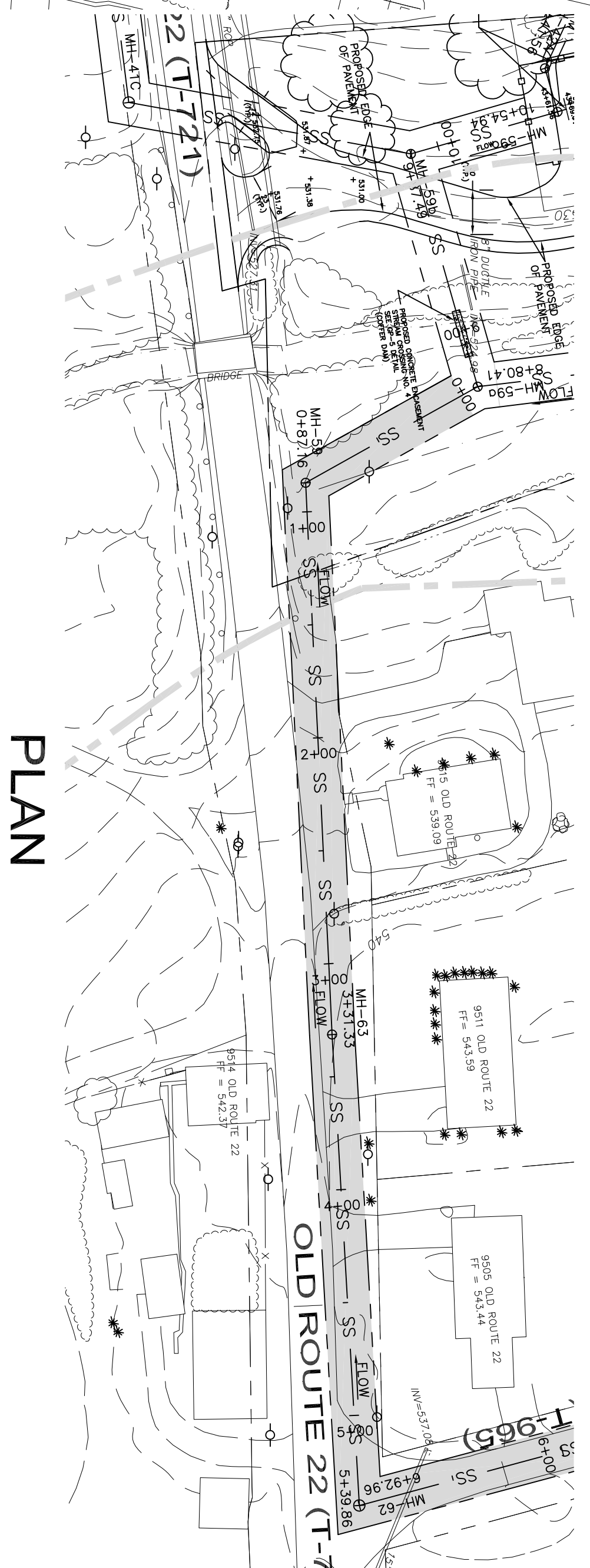


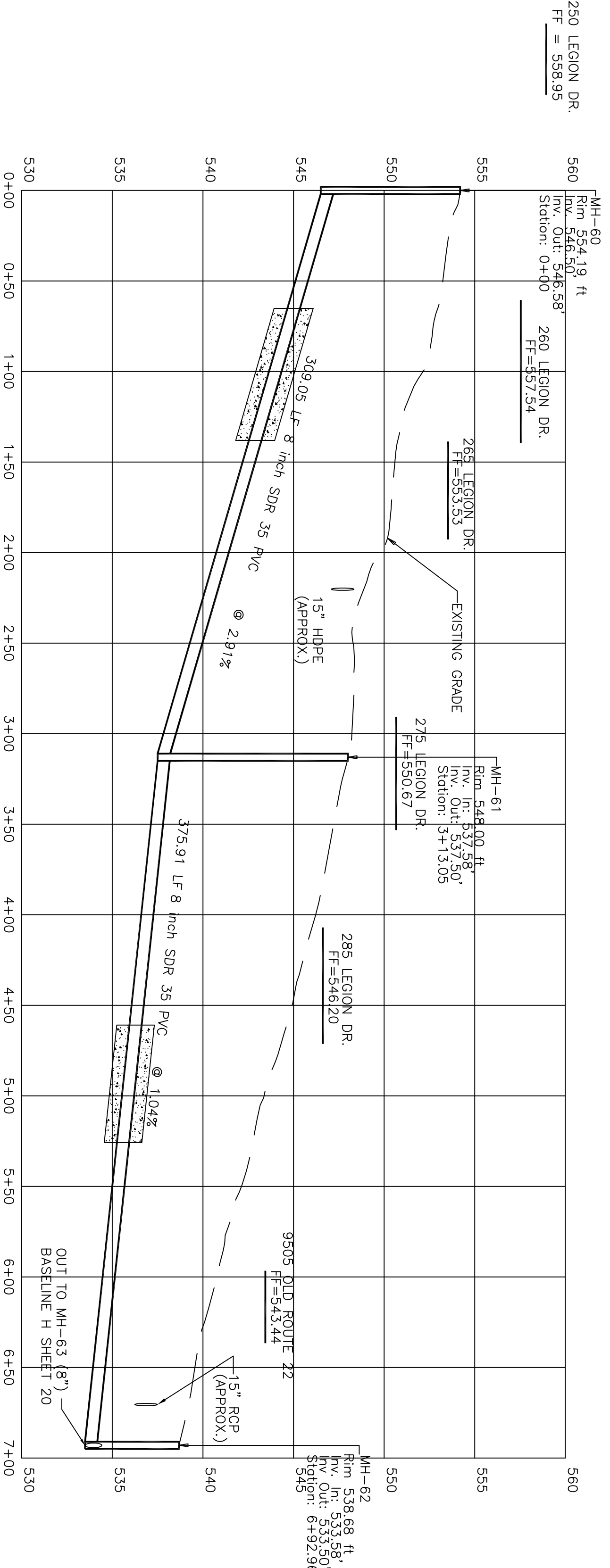
**PLAN**

BASELINE G STA. 0+00 TO 7+00



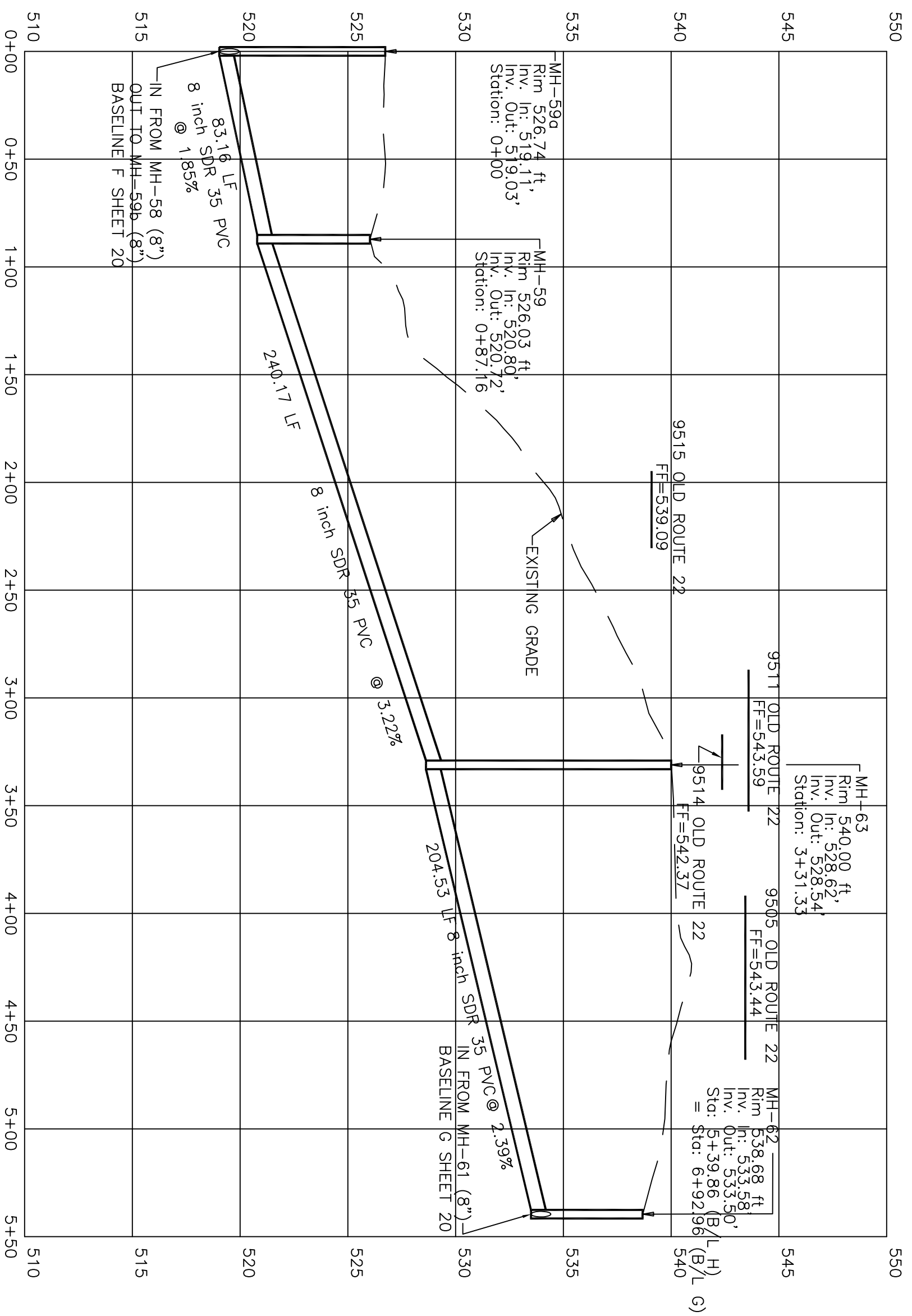
**PLAN**

BASELINE H STA. 0+00 TO 6+00



**PROFILE**

1" = 50' HORIZ.  
1" = 5' VERT.



**PROFILE**

1" = 50' HORIZ.  
1" = 5' VERT.

THESE PLANS ARE FOR REVIEW PURPOSES ONLY AND ARE NOT TO BE USED FOR CONSTRUCTION UNTIL ALL APPROPRIATE PERMITS AND APPROVALS ARE OBTAINED. APPROVAL BY JOHN K. ROCHE, P.E.

NOTE: REFER TO NOTES AND DETAILS CONTAINED ELSEWHERE IN THESE PLANS FOR ADDITIONAL INFORMATION.

THIS IS A COPY AND NOT THE ORIGINAL DRAWING. THE ORIGINAL DRAWING IS ON FILE IN OUR OFFICE. ANY LIABILITY WHATSOEVER IS LIMITED TO THE ORIGINAL NOT BEARING AN ORIGINAL SIGNATURE AND IMPRINTED SEAL SHALL NOT BE CONSIDERED AN OFFICIAL COPY.

SEAL	SEAL	
SEAL	SEAL	
1	2/14/08	EASEMENT REVISION
NO	DATE	REVISION

MANAGER:  
**JOHN K. ROCHE**

DESIGN BY: **BSC/ASG**      CHECKED BY: **JKR**

DRAWN BY: **JTB/ACH**      CHECKED BY: **JKR**

SEAL

JOHN K. ROCHE  
PE-053824-E

CLIENT

BETHEL TOWNSHIP  
MUNICIPAL AUTHORITY  
P.O. BOX 24  
BETHEL, PA 19507  
(717) 933-8813

SCALE

1" = 50'

PROJECT TITLE

SANITARY SEWER PLANS  
COLLECTION & CONVEYANCE LINES  
FOR  
THE VILLAGE OF BETHEL

BETHEL TOWNSHIP      BERKS COUNTY, PA

SHEET TITLE

PLAN AND PROFILE  
(Sheet 17 of 19)

**VISION**  
ENGINEERING, INC.

CIVIL - SITE - MUNICIPAL

155 E. FRONT ST. - LITITZ, PA 17543  
TEL. (717) 625-1930    FAX (717) 625 1931

DATE: JULY 3, 2006

PROJECT NO.: B1MA-0301

SHEET NO.: 20 OF 44