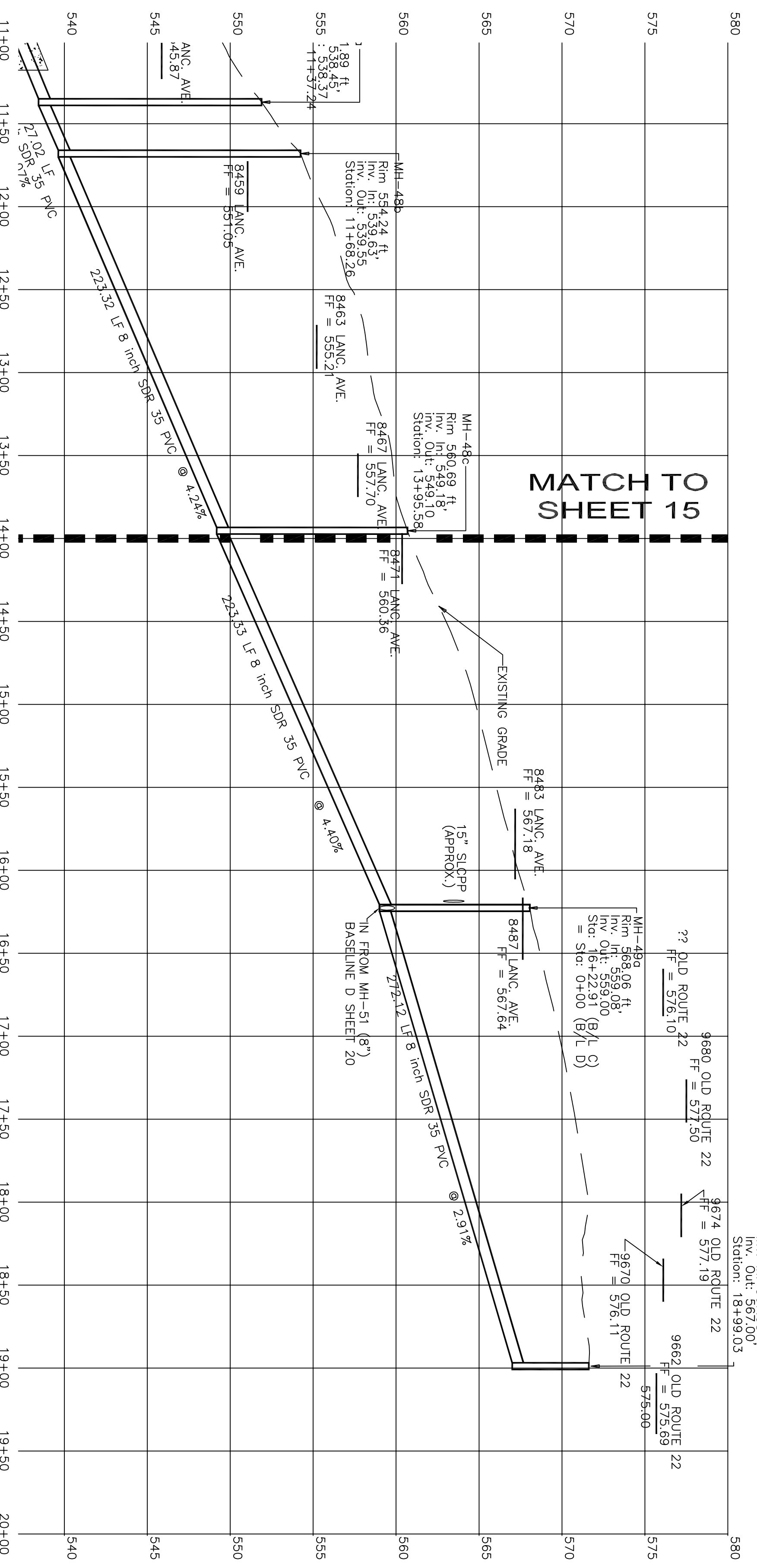


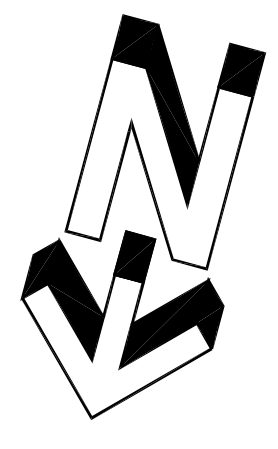
**PLAN**

BASELINE C STA. 14+00 TO 21+00



**PROFILE**

1" = 50' HORIZ.  
1" = 5' VERT.



THESE PLANS ARE FOR REVIEW PURPOSES ONLY AND ARE NOT TO BE USED FOR CONSTRUCTION UNTIL ALL APPROPRIATE APPROVALS ARE OBTAINED BY JOHN K. ROCHE, P.E.

NOTE: REFER TO NOTES AND DETAILS CONTAINED ELSEWHERE IN THESE PLANS FOR ADDITIONAL INFORMATION.

THIS IS A COPY AND NOT THE ORIGINAL DRAWING. THE ORIGINAL DRAWING IS ON FILE IN OUR OFFICE. ANY LIABILITY WHATSOEVER IS LIMITED TO THE ORIGINAL NOT BEARING AN ORIGINAL SIGNATURE AND IMPRINTED SEAL SHALL NOT BE CONSIDERED AN OFFICIAL COPY.

**VISION ENGINEERING, INC.**  
CIVIL - SITE - MUNICIPAL  
155 E. FRONT ST. - LITITZ, PA 17543  
TEL. (717) 625-1930 FAX (717) 625 1931

PROJECT TITLE  
**SANITARY SEWER PLANS  
COLLECTION & CONVEYANCE LINES  
FOR  
THE VILLAGE OF BETHEL**  
BETHEL TOWNSHIP BERKS COUNTY, PA

SHEET TITLE  
**PLAN AND PROFILE  
(Sheet 13 of 19)**

CLIENT  
**BETHEL TOWNSHIP  
MUNICIPAL AUTHORITY  
P.O. BOX 24  
BETHEL, PA 19507  
(717) 933-8813**

SCALE  
1" = 50'

MANAGER:  
**JOHN K. ROCHE**

DESIGN BY: **BSC/ASC** CHECKED BY: **JKR**

DRAWN BY: **JTB/ACH** CHECKED BY: **JKR**

SEAL  
JOHN K. ROCHE  
PE-053824-E

NO	DATE	REVISION
1	2/14/08	EASEMENT REVISION

DATE: JULY 3, 2006  
PROJECT NO.: B1MA-0301  
SHEET NO.: 16 OF 44