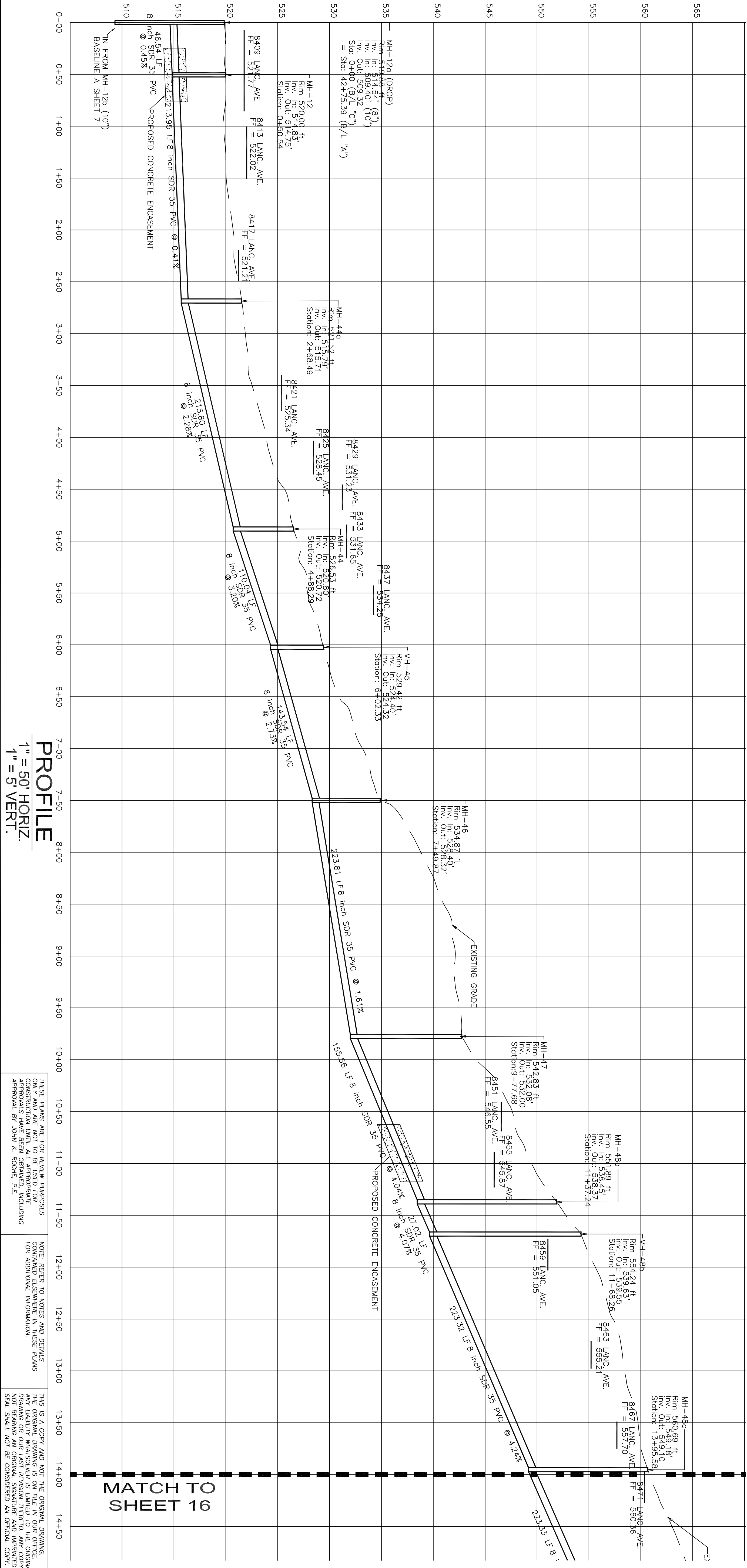


PLAN  
BASELINE C STA. 0+00 TO 14+00



PROFILE  
1" = 50' HORIZ.  
1" = 5' VERT.

THESE PLANS ARE FOR REVIEW PURPOSES ONLY AND ARE NOT TO BE USED FOR CONSTRUCTION UNTIL ALL NECESSARY APPROVALS HAVE BEEN OBTAINED. APPROVAL BY JOHN K. ROCHE, P.E.

NOTE: REFER TO NOTES AND DETAILS CONTAINED ELSEWHERE IN THESE PLANS FOR ADDITIONAL INFORMATION.

THIS IS A COPY AND NOT THE ORIGINAL DRAWING. THE ORIGINAL DRAWING IS ON FILE IN OUR OFFICE. ANY LIABILITY WHATSOEVER IS LIMITED TO THE ORIGINAL NOT BEARING AN ORIGINAL SIGNATURE AND IMPRINTED SEAL SHALL NOT BE CONSIDERED AN OFFICIAL COPY.

**VISION ENGINEERING, INC.**  
CIVIL - SITE - MUNICIPAL  
155 E. FRONT ST. - LITITZ, PA 17543  
TEL. (717) 625-1930 FAX (717) 625 1931

PROJECT TITLE  
SANITARY SEWER PLANS  
COLLECTION & CONVEYANCE LINES  
FOR  
THE VILLAGE OF BETHEL  
BETHEL TOWNSHIP BERKS COUNTY, PA

SHEET TITLE  
PLAN AND PROFILE  
(Sheet 12 of 19)

CLIENT  
BETHEL TOWNSHIP  
MUNICIPAL AUTHORITY  
P.O. BOX 24  
BETHEL, PA 19507  
(717) 933-8813

MANAGER:  
JOHN K. ROCHE

DESIGN BY: BSC/ASC  
DRAWN BY: JTB/ACH

CHECKED BY: JKR  
CHECKED BY: JKR

SCALE  
1" = 50'

SEAL  
JOHN K. ROCHE  
PE-053824-E

NO	DATE	EASEMENT REVISION	REVISION
1	2/14/08	EASEMENT REVISION	

DATE: JULY 3, 2006  
PROJECT NO.: BTM-0301  
SHEET NO.: 15 OF 44