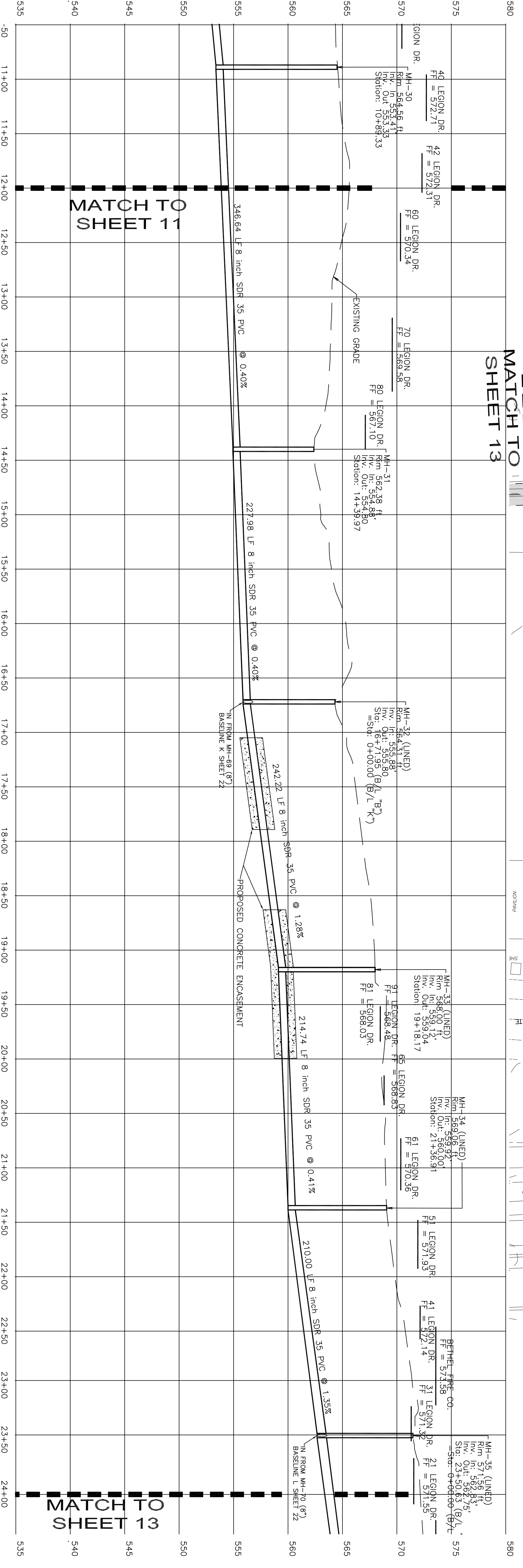
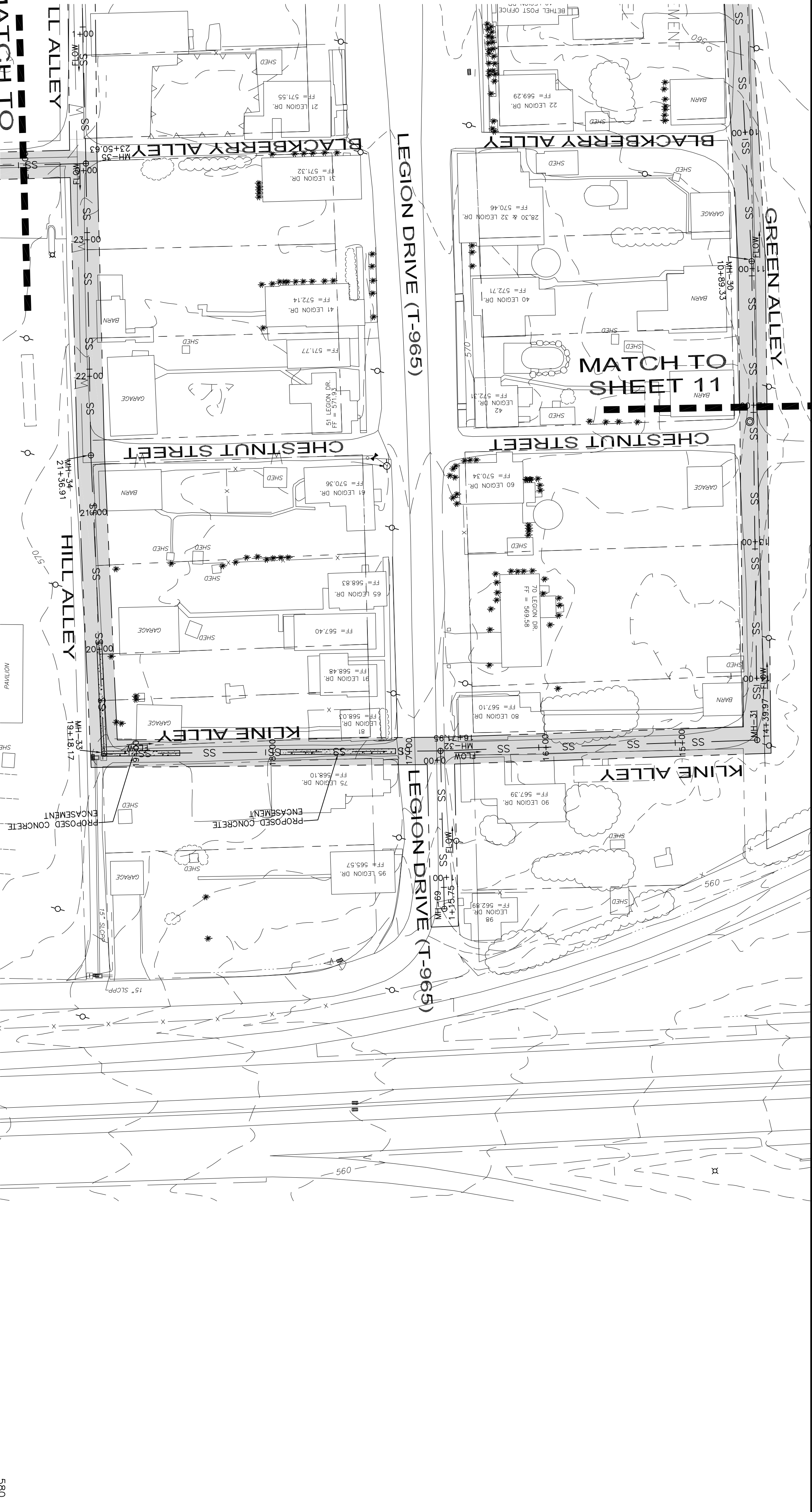


**PLAN**

BASELINE B STA. 12+00 TO 24+00



**PROFILE**  
 1" = 50' HORIZ.  
 1" = 5' VERT.

THESE PLANS ARE FOR REVIEW PURPOSES ONLY AND ARE NOT TO BE USED FOR CONSTRUCTION UNTIL ALL APPROPRIATE APPROVALS HAVE BEEN OBTAINED. APPROVAL BY JOHN K. ROCHE, P.E.

NOTE: REFER TO NOTES AND DETAILS CONTAINED ELSEWHERE IN THESE PLANS FOR ADDITIONAL INFORMATION.

THIS IS A COPY AND NOT THE ORIGINAL DRAWING. THE ORIGINAL DRAWING IS ON FILE IN OUR OFFICE. ANY LIABILITY WHATSOEVER IS LIMITED TO THE ORIGINAL NOT READING AN ORIGINAL SIGNATURE AND IMPRINTED SEAL SHALL NOT BE CONSIDERED AN OFFICIAL COPY.

**VISION ENGINEERING, INC.**  
 CIVIL - SITE - MUNICIPAL  
 155 E. FRONT ST. - LITITZ, PA 17543  
 TEL. (717) 625-1930 FAX (717) 625 1931

PROJECT TITLE  
**SANITARY SEWER PLANS  
 COLLECTION & CONVEYANCE LINES  
 FOR  
 THE VILLAGE OF BETHEL**  
 BETHEL TOWNSHIP BERKS COUNTY, PA

SHEET TITLE  
**PLAN AND PROFILE  
 (Sheet 9 of 19)**

CLIENT  
**BETHEL TOWNSHIP  
 MUNICIPAL AUTHORITY  
 P.O. BOX 24  
 BETHEL, PA 19507  
 (717) 933-8813**

MANAGER:  
**JOHN K. ROCHE**

DESIGN BY: **BSC/ASC** CHECKED BY: **JKR**  
 DRAWN BY: **JTB/ACH** CHECKED BY: **JKR**

SCALE  
 1" = 50'

SEAL	SEAL
JOHN K. ROCHE	PE-053824-E
1	2/14/08 EASEMENT REVISION
NO	DATE REVISION